

NaviSlides Add In for PowerPoint XP – 2007

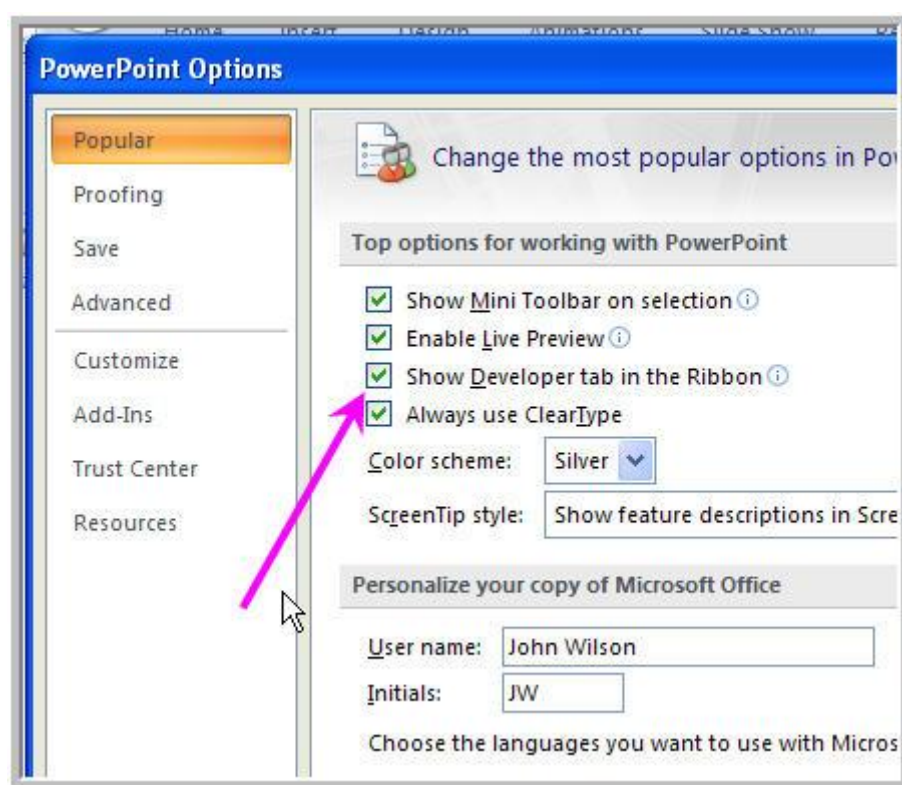
NaviSlides may change the way you Navigate around PowerPoint shows for ever! The Add In creates thumbnails of the previous 5 and next 5 slides (where this is possible) adds them to each slide with animation and links to the corresponding slides. It can also create Index sheets.

Obviously adding 10 thumbs to every slide will increase file size but the thumbs are configured to minimise this. Hyperlinks are written in a special format that largely eliminates the potential memory problem associated with large numbers of links.

The thumbnails only show when the 1 (previous 5) or 2 (next 5) buttons are clicked the X buttons hides the thumbs.

Installing

Make sure that Macro security is set low enough to run macros. In XP or 2003 you should choose “Medium” and in 2007 “Disable all WITH notification”. In 2003 these options are in Tools > Macro > Security and in 2007 you should go to Office Button (the big one) and choose PowerPoint Options > Popular > Show Developer tab in the Ribbon.



BEFORE CONTINUING CLOSE POWERPOINT COMPLETELY

Now run the file NaviSlides.exe. If prompted enable macros

In XP / 2003 a new toolbar should appear when PowerPoint is opened, in 2007 you will need to select the Add Ins tab. If you cannot see the toolbar you may need to manually add the Add In.

In versions before 2007 use Tools > AddIns > Add New

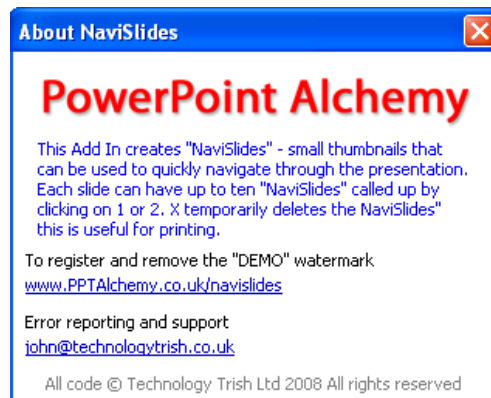
In 2007 Office Button > PowerPoint Options > AddIns > Manage PowerPoint AddIns > Add New

You may reset your macro security once the Add In is installed.

The Add In has 7 controls



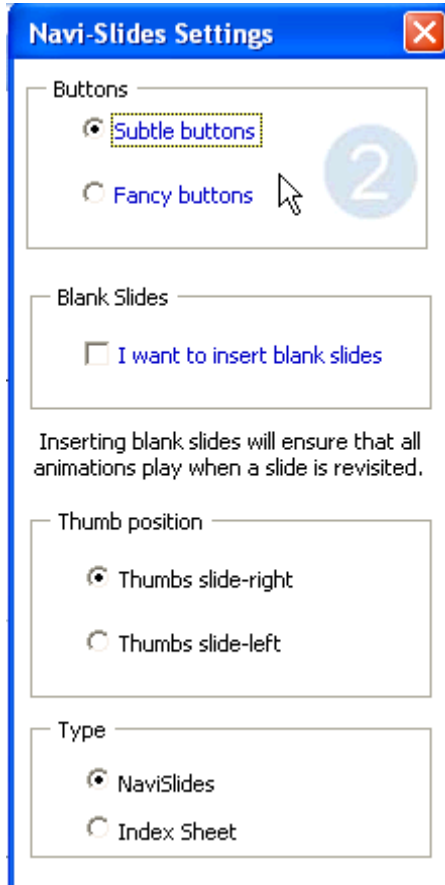
NaviSlides calls up an "About" screen



The Tools icon



Opens this dialogue where you can choose button style and left / right thumbs.



Blank Slides

If you have animations on your slide you may find that they do not play when the slide is visited a second or subsequent time. Inserting a blank slide with an auto transition of zero seconds will solve this problem. The Add In can do this for you. You should not insert these slides manually as the add in will then create blank thumbs.

Type

As well as NaviSlides the Add In can make index sheets. Each sheet is inserted as a new slide at the beginning and holds up to 25 thumbs with links to the relevant slides. If necessary several slides will be produced. Note the Add Blanks selection is disabled in this mode (see note below)

All settings are remembered even if PowerPoint is closed down.

Cactus Picture



This is the button that creates the NaviSlides or index pages and adds animation and linking.

STOP Icon



This removes all NaviSlides / Index pages and animations. The Add In creates complex animations which may make your custom animation pane look very confusing! You should always run NaviSlides **AFTER** you have created the animations in your presentation. If you wish to adapt them it is usually best to use this button to undo the Navislide animations and then redo them when you have finished.

Removing the NaviSlides is also useful if you wish to print out slides, notes or handouts.

The Four Way Arrow

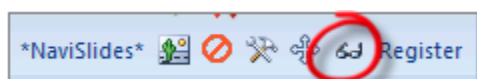


If the standard buttons overlap detail on your slides this tool can be used to reposition ALL buttons at once. Move or resize the buttons on any slide to your requirements, select one button and then click the four way arrow. All of the buttons in the presentation will follow the settings.

Note this setting is not saved for future presentations.

Blank Slides

You may know that animations only play on the first visit to a slide. The usual method of making animations play on ALL visits is to link to a blank slide before the animated slide and give this slide an auto transition of zero seconds. If you need to add A FEW blank slides like this to enable animations on a second visit to a slide please add them after making the index sheets to avoid blank thumbs. In this instance you will need to manually adjust the hyperlinks so that they link to the blank slides. Changing hyperlinks is fairly simple in index mode but can be tricky in NaviSlide mode as some thumbnails are obscured. To make this easier clicking the spectacle tool hides / unhides the front layer of thumbs.



If you tick the "Blank Slides" box in "Tools" NaviSlides will add blank slides and fix all the hyperlinks for you. This is the preferred option if you have more than a few blank slides to add!

Support

Please email support@pptalchemy.co.uk

Please note you cannot have BOTH an Index sheet and NaviSlides.

The Demo version is fully functional but will add a small DEMO watermark after 3 uses. To remove this please register at <http://PPTAlchemy.co.uk/NaviSlides.html> to get a code and then click "Register"

Known Issues

Animations on the MASTER may prevent thumbs exiting. Thumbs may remain visible unless X is clicked. To resolve this either do not use Master animations or copy the animation to the slide (Right click in animation pane) and then drag any On Click animations below the exits for the thumbs.

